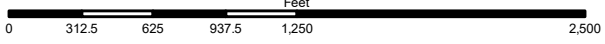
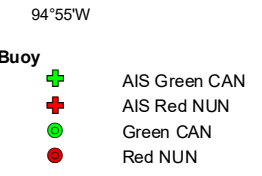
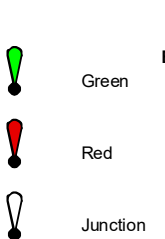
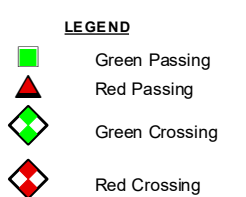
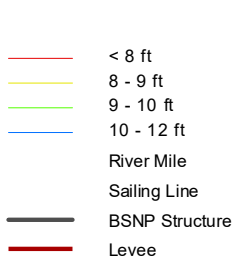
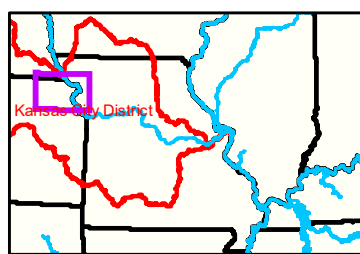
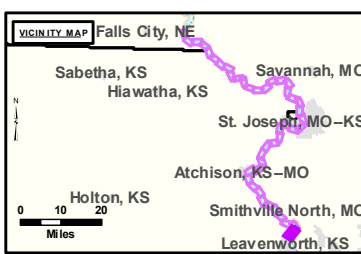


Atchison Gage = 10.8 at time of collection 05 April 2021"

Gage\_L



**NOTES:**  
 Horizontal Coordinate System:  
 World Geodetic System of 1984 (WGS84), projected to the Universal Transverse Mercator (UTM) Zone 15 North.  
 Distance units in U.S. Survey Feet  
 Vertical Datum:  
 Soundings are shown in feet and indicated depths are referenced to water surface at time of collection.  
 The information depicted on this map represents the results of a survey conducted on the date indicated and can only be considered to represent the general condition existing at that time.  
 The location of navigation aids are based on and provided by the U.S. Coast Guard.



Notes

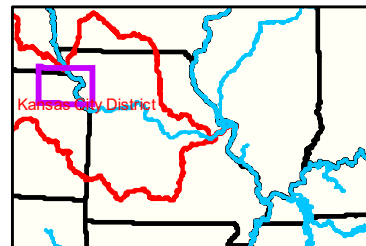
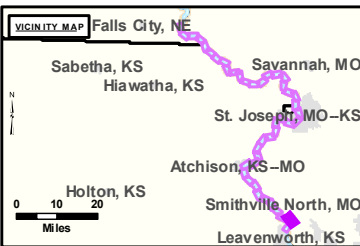
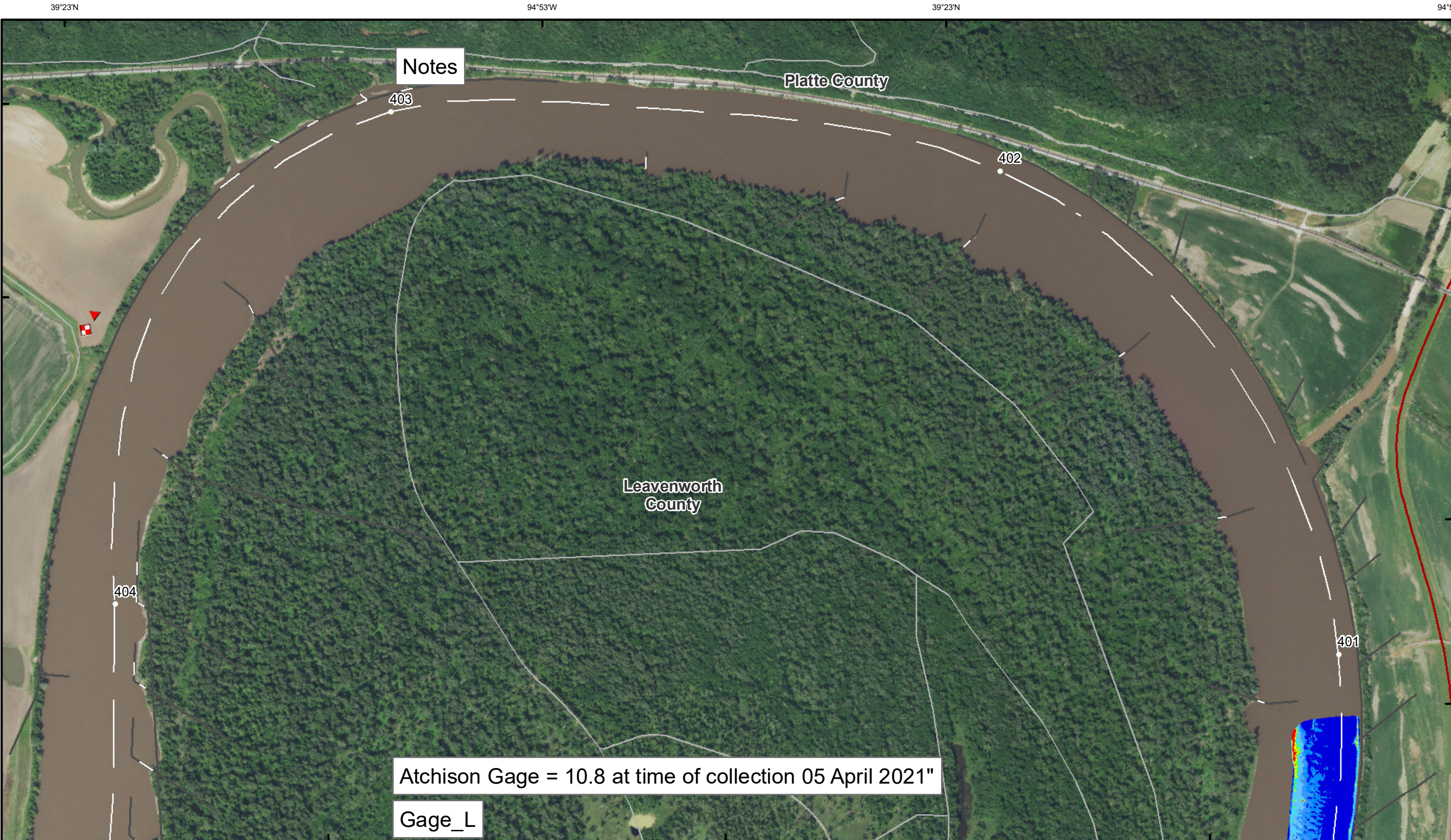


Disclaimer: The U.S. Army Corps of Engineers (USACE) makes no warranty, express or implied, for the use of this data for any purpose other than that for which it was collected. The USACE is not responsible for any errors or omissions in this data. The user assumes all liability for any use of this data. The USACE is not responsible for any damage or injury resulting from the use of this data. The USACE is not responsible for any loss of data or information resulting from the use of this data. The USACE is not responsible for any loss of time or money resulting from the use of this data. The USACE is not responsible for any loss of reputation resulting from the use of this data. The USACE is not responsible for any loss of business resulting from the use of this data. The USACE is not responsible for any loss of income resulting from the use of this data. The USACE is not responsible for any loss of property resulting from the use of this data. The USACE is not responsible for any loss of life resulting from the use of this data. The USACE is not responsible for any loss of limb resulting from the use of this data. The USACE is not responsible for any loss of sight resulting from the use of this data. The USACE is not responsible for any loss of hearing resulting from the use of this data. The USACE is not responsible for any loss of smell resulting from the use of this data. The USACE is not responsible for any loss of taste resulting from the use of this data. The USACE is not responsible for any loss of touch resulting from the use of this data. The USACE is not responsible for any loss of movement resulting from the use of this data. The USACE is not responsible for any loss of cognition resulting from the use of this data. The USACE is not responsible for any loss of emotion resulting from the use of this data. The USACE is not responsible for any loss of personality resulting from the use of this data. The USACE is not responsible for any loss of identity resulting from the use of this data. The USACE is not responsible for any loss of individuality resulting from the use of this data. The USACE is not responsible for any loss of humanity resulting from the use of this data. The USACE is not responsible for any loss of civilization resulting from the use of this data. The USACE is not responsible for any loss of progress resulting from the use of this data. The USACE is not responsible for any loss of knowledge resulting from the use of this data. The USACE is not responsible for any loss of wisdom resulting from the use of this data. The USACE is not responsible for any loss of power resulting from the use of this data. The USACE is not responsible for any loss of authority resulting from the use of this data. The USACE is not responsible for any loss of respect resulting from the use of this data. The USACE is not responsible for any loss of honor resulting from the use of this data. The USACE is not responsible for any loss of reputation resulting from the use of this data. The USACE is not responsible for any loss of dignity resulting from the use of this data. The USACE is not responsible for any loss of pride resulting from the use of this data. The USACE is not responsible for any loss of self-respect resulting from the use of this data. The USACE is not responsible for any loss of self-esteem resulting from the use of this data. The USACE is not responsible for any loss of self-worth resulting from the use of this data. The USACE is not responsible for any loss of self-confidence resulting from the use of this data. The USACE is not responsible for any loss of self-belief resulting from the use of this data. The USACE is not responsible for any loss of self-trust resulting from the use of this data. The USACE is not responsible for any loss of self-respect resulting from the use of this data. The USACE is not responsible for any loss of self-esteem resulting from the use of this data. The USACE is not responsible for any loss of self-worth resulting from the use of this data. The USACE is not responsible for any loss of self-confidence resulting from the use of this data. The USACE is not responsible for any loss of self-belief resulting from the use of this data. The USACE is not responsible for any loss of self-trust resulting from the use of this data.

KANSAS CITY DISTRICT MISSOURI RIVER AREA OFFICE	
Submitted By:	MRAO
Reviewed By:	MRAO
Checked By:	MRAO

**Survey Information**  
 MO\_05\_LMR  
 MO\_05\_LMR\_20210405\_CS\_400\_3\_400\_9\_SORT  
 05 April 2021

**Sheet Number**  
 1 of 43



**94°54'W LEGEND**

	< 8		< 8 ft		Green Passing		Green
	8 - 9		8 - 9 ft		Red Passing		AIS Green CAN
	9 - 9.5		9 - 10 ft		Green Crossing		AIS Red NUN
	9.5 - 10		10 - 12 ft		Red Crossing		Green CAN
	10 - 12		River Mile		Red Crossing		Red NUN
	12 - 14		Sailing Line		Junction		
	14 - 16		BSNP Structure				
	> 16		Levee				

**Buoy**

- AIS Green CAN
- AIS Red NUN
- Green CAN
- Red NUN

**Scale:** 0 312.5 625 937.5 1,250 2,500 Feet

**NOTES:**  
 Horizontal Coordinate System: World Geodetic System of 1984 (WGS84), projected to the Universal Transverse Mercator (UTM) Zone 15 North. Distance units in U.S. Survey Feet.  
 Vertical Datum: Soundings are shown in feet and indicated depths are referenced to water surface at time of collection.  
 The information depicted on this map represents the results of a survey conducted on the date indicated and can only be considered to represent the general condition existing at that time.  
 The location of navigation aids are based on and provided by the U.S. Coast Guard.

Notes

Atchison Gage = 10.8 at time of collection 05 April 2021"

Gage\_L

Platte County

Leavenworth County



**DISCLAIMER:** The U.S. Army Corps of Engineers (USACE) provides this information as a service to the public. It is not intended to be used for any purpose other than that for which it was intended. The USACE makes no warranty, express or implied, regarding the accuracy, reliability, or completeness of the information. The user assumes all liability for any use of the information. The USACE is not responsible for any errors or omissions in this information. The USACE is not responsible for any damages, including consequential damages, arising from the use of this information. The USACE is not responsible for any loss of data or information. The USACE is not responsible for any loss of profit or business. The USACE is not responsible for any loss of income. The USACE is not responsible for any loss of opportunity. The USACE is not responsible for any loss of reputation. The USACE is not responsible for any loss of honor. The USACE is not responsible for any loss of dignity. The USACE is not responsible for any loss of respect. The USACE is not responsible for any loss of prestige. The USACE is not responsible for any loss of status. The USACE is not responsible for any loss of position. The USACE is not responsible for any loss of rank. The USACE is not responsible for any loss of title. The USACE is not responsible for any loss of office. The USACE is not responsible for any loss of authority. The USACE is not responsible for any loss of power. The USACE is not responsible for any loss of jurisdiction. The USACE is not responsible for any loss of control. The USACE is not responsible for any loss of management. The USACE is not responsible for any loss of direction. The USACE is not responsible for any loss of supervision. The USACE is not responsible for any loss of guidance. The USACE is not responsible for any loss of instruction. The USACE is not responsible for any loss of training. The USACE is not responsible for any loss of education. The USACE is not responsible for any loss of learning. The USACE is not responsible for any loss of knowledge. The USACE is not responsible for any loss of skill. The USACE is not responsible for any loss of ability. The USACE is not responsible for any loss of talent. The USACE is not responsible for any loss of genius. The USACE is not responsible for any loss of intellect. The USACE is not responsible for any loss of wisdom. The USACE is not responsible for any loss of understanding. The USACE is not responsible for any loss of insight. The USACE is not responsible for any loss of perception. The USACE is not responsible for any loss of awareness. The USACE is not responsible for any loss of consciousness. The USACE is not responsible for any loss of awareness. The USACE is not responsible for any loss of awareness.

KANSAS CITY DISTRICT MISSOURI RIVER AREA OFFICE	
Submitted by:	MRAO
Reviewed by:	MRAO
Checked by:	MRAO

**Survey Information**  
 MO\_05\_LMR  
 MO\_05\_LMR\_20210405\_CS\_400\_3\_400\_9\_SORT  
 05 April 2021

**Sheet Number**  
 2 of 43